

DCDHOME

ASPEN

EDITION

THE LUXURY HOME DESIGN & DÉCOR RESOURCE



HOME SWEET HOME

Unique and diverse home furnishings

TURNING GREEN INTO GOLD

Cultivating a conscious investment

Winter '08 / Spring '09

DCDHOME.COM

SPECIAL SECTION

Luxury Home Showcase

\$4.95 U.S.





DRAWINGS

- Floor plans
- Lighting and electrical plans
- Enlarged plans/elevations of all key areas
- Sections and details of complex finish locations

SPECIFICATIONS BOOK

- Finish specifications (carpet, wall color, tile, stone, etc.)
- Lighting and Appliance specifications
- Plumbing hardware and bath accessory specifications
- Cabinetry, door, trim and hardware specifications

As the client you should familiarize yourself with the contents to be sure all your needs and desires have been addressed.

Construction Administration

Communication between the owner, contractor, and designer is vital. Job-site meetings should be documented and the notes copied to you to ensure your satisfaction with decisions made. A good time for you to visit the project is before sheetrock is

installed so you can check lighting and electrical locations and switching before it becomes difficult to change.

The Final Product

Throughout the course of the project you should feel that the design team is professional and attentive to your needs. At the conclusion you should be rewarded with a beautiful and functional space.

Keeping a finished look

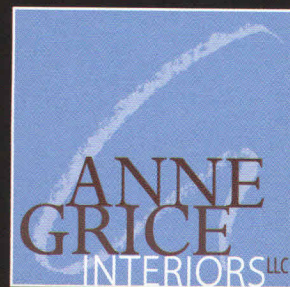
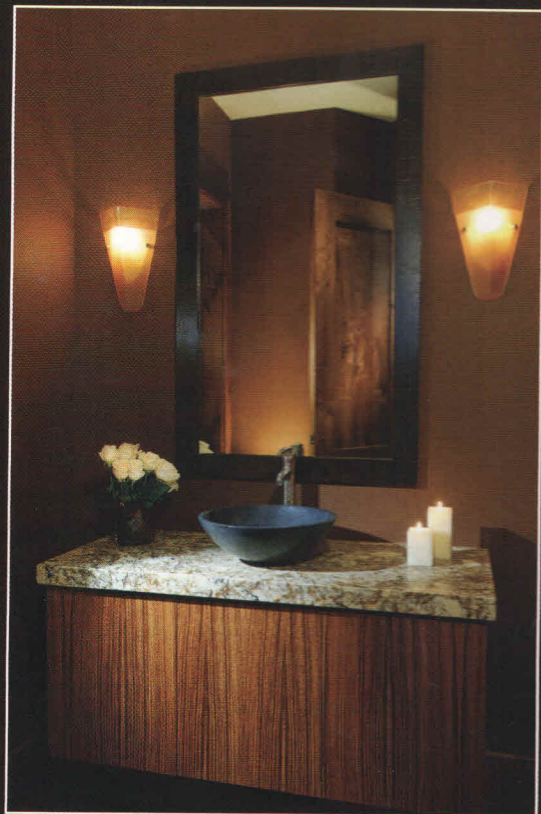
Even after installation and the final punchlist, your designer is still your greatest resource. Consider having your designer walk through your home every 6 to 12 months to make suggestions or add touches to keep your home fresh and up to date.

Anne Grice, ASID is principal of Anne Grice Interiors with designers Carrie Wolfer and Jamie Beers. Anne Grice Interiors prides itself on excellent communication and complete client satisfaction. For more information call 970.927.1074 or visit www.annegrice.com



"Anne Grice Interiors was extremely professional and responsive. Anne's knowledge of materials and resources, and her ability to visualize the finished product made her invaluable to the project."

— DOUG THROM, Doug Throm Construction Inc.
General Contractor & Developer
71 Slopeside Lane, Snowmass Village, CO



T 970.927.1074 ■ F 970.927.5328 ■ www.annegrice.com ■ 123 EMMA ROAD STE 200B ■ BASALT COLORADO 81621